



5<sup>TH</sup> ANNUAL

# THE CLEAR CHOICE

*female sale*

SATURDAY, OCTOBER 22, 2022

1:00 PM EST • MILAN, IN

*Selling 60+ Simmental & SimAngus Females  
Show Heifer Prospects, Proven Donors & Bred Females*

5<sup>TH</sup> ANNUAL  
**THE CLEAR  
 CHOICE**  
*female sale*

**SATURDAY, OCTOBER 22, 2022  
 1:00 PM EST • MILAN, IN**

*Selling 60+ Simmental & SimAngus Females  
 Show Heifer Prospects, Proven Donors & Bred Females*

**SALE SCHEDULE**

**Friday, October 21<sup>st</sup>**  
 All Day..... Cattle on display for viewing  
**Saturday, October 22<sup>nd</sup>**  
 8:00 AM..... Cattle on display for viewing  
 1:00 PM..... The Clear Choice Female Sale

**SALE LOCATION**

ClearWater Simmentals Sale Facility  
 5512E St Rd 350 Milan, IN 47031  
*Sale facility has hard surface parking and is handicap accessible.*

**HOTELS**

Double Tree ..... 812-539-8888  
 51 Walnut St, Lawrenceburg, IN  
 Comfort Inn..... 812-539-3600  
 1610 Flossie Dr, Lawrenceburg, IN 47025

**TRUCKING**

Brian Wyatt ..... 423-240-5533  
 Dick Coleman ..... 765-461-0954

**SALE TERMS & CONDITIONS**

All animals will be sold in accordance with the suggested guidelines of the American Simmental Association. For updated EPDs, genetic status, plus the current ASA guidelines and conditions go to [www.simmental.org](http://www.simmental.org). Announcements made sale day and from the auction block take precedence over printed material associated with this sale. Anyone attending this sale attends at his or her own risk. ClearWater Simmentals, DP Sales Management, LLC, or guest consignors will not be responsible for any personal injury while attending this sale.

**HERD HEALTH**

Both Clearwater and Beshears have taken proper protocol and vaccines on herd health. All the dams have a negative test for Johnes.

**SALE DAY PHONES**

Doug Parke ..... 859-421-6100  
 Drew Hatmaker ..... 423-506-8844  
 Holli Hatmaker ..... 859-707-5248  
 Leah Meinders..... 812-498-2840  
 Jeff Meinders..... 812-871-1313  
 Bobby Beshears ..... 765-717-4789

**SALE MANAGEMENT**

**DP** **Doug & Debbie Parke | Drew & Holli Hatmaker**  
 Office ..... 859-987-5758  
 153 Bourbon Hills Paris, KY 40361  
 Sales Management.. [office@dpsalesllc.com](mailto:office@dpsalesllc.com) | [www.dpsalesllc.com](http://www.dpsalesllc.com)

**SALE STAFF**

Thomas Carper, *Auctioneer* ..... 540-336-2737  
 Mike Berger, *Ring Staff* ..... 574-850-5605  
 Josh Jasper, *Ring Staff* ..... 859-285-8702  
 Ryan Haefner, *Consultant*..... 815-499-0522  
 Dalton Lundy, *Consultant*..... 502-727-6898  
 Tim Schwab, *Consultant*..... 812-569-8536  
 Austin Sorenson, *Consultant* ..... 712-310-3788

**ONLINE BIDDING**

Bid online and watch the sale live  
 at [dvauction.com](http://dvauction.com)



**SALE REGISTRATION & PAYMENT**

All buyer numbers will only be issued with a valid ID and payment is due day of sale. DP Sales Management, LLC accepts Visa, MasterCard, check, e-check, or cash. All purchases are expected to be paid day of sale unless arrangements have been made with sale management. Cattle will not be transferred until paid for in full. Purchases made through internet bidding follow the same terms. Payment must be completed on day of sale by credit card or e-check.



# join us on sale day!

It is always an honor and privilege to welcome cattlemen and women from across the U.S. to Milan, Indiana for the Clear Choice Female Sale. I know that I can speak on behalf of Jeff and Leah, that your interest in their operation certainly means a lot to them.

I'm not sure if you can go to another sale across the country and find two sets of breeders who work better together than the Clear Water and Beshears programs. Bobby is doing a great job building a highly-respectable program, and both him and Leah share common goals when it comes to quality and customer service. I can guarantee you that the two of them will answer any questions you have about the sale offering and be happy to discuss their programs with you. It is an honor to work with two forward thinking programs always trying to make their cattle operation better.

As you flip through the pages you will see this year's offering includes top donors from both the Clear Water and Beshears programs. More importantly, you will see progeny right next to them so you will see just what kind of impact those females can have on your herd. They are offering females and genetics that have worked for them, and now they are happy to share them with their customers.

As always, if DP Sales Management can be of assistance to you prior to the sale or the day of, please do not hesitate to contact us. DVAuction will be available if you are not able to make it to Milan on sale day. On behalf of the entire sale staff, Clear Water, and Beshear programs we look forward to visiting with you about the offering at the Clear Choice Female Sale and its impact on your operation.

Doug Parke, DP Sales Management



## CLEAR WATER SIMMENTALS

### ClearWater Simmentals

Jeff & Leah Meinders / Milan, Indiana  
Leah Meinders, 812-498-2840  
Jeff Meinders, 812-871-1313  
[www.clearwatersimmentals.com](http://www.clearwatersimmentals.com)



## BESHEARS Simmentals

### Beshears Simmentals

Kenny, Bobby & David Beshears & Family  
Winchester, IN  
765-717-4789



### Doug & Debbie Parke / Drew & Holli Hatmaker

Doug, 859-421-6100 / Office, 859-987-5758  
Drew, 423-506-8844 / Holli, 859-707-5248  
153 Bourbon Hills Paris, KY 40361  
office@dpsalesllc.com / www.dpsalesllc.com

# females built for you

It is always humbling to sit down at sale time and welcome you to the Clear Choice Sale. For so many years we have been working to assemble a Simmental operation with premier genetics, but genetics that must be functional, have longevity, and work for a variety of operations.

It is challenging but rewarding each year as we sort through our cow herd, and look at what we will offer in the sale. We think about that thought all year long as we breed, calve, and select cattle. You never stop thinking about your production sale; just always planning for the next. It is always difficult to pick a favorite in the offering because we truly believe that they are all unique genetic offerings that have their place in various operations.

We appreciate Beshears Simmentals for their dedication to their operation, the Indiana beef industry, and their friendship. You will notice that Bobby has dug deep into his operation this year to bring a very unique and special offering.

Like always, if we can be of any assistance to you, please feel free to contact us. The cattle will be on display throughout the week of the sale, and we look forward to sharing this set of females with you.

ClearWater Simmentals



# Blackbird Donor



Lot 1 Progeny

CLEAR WATER SIMMENTALS



## DAF *Blackbird* C364

BD. 3/3/15 • ASA#. 2994717 • Purebred Donor  
Tattoo. C364 • Adj. BW. 61 lbs.

WS A STEP UP X27  
*sire* **RGRS SRG TWO STEP 20Z ET**  
WLTR LYDIA 39U ET  
MR HOC BROKER  
*dam* **DAF BLACKBIRD A164**  
AKERS Y035

### AI'd on 6/10 to CLRWTR Clear Advantage. Safe.

We are excited to start off the 2022 edition of the Clear Choice Female Sale with a donor female that has been a great producer for us here at Clear Water, and who still has a lot of good days and calves in front of her. This donor has a great track record with high sellers in 2020 for \$13,000 to Hadden Simmentals plus another for \$7,500 to Brookland Farms. In the 2020 bull sale sons sold to Indiana and Ohio. In 2021, a top bred sold right here in Indiana. We look forward to seeing the path the new owner takes this female, and what exciting matings you choose. Please feel free to contact us for more information on this female. Homo Polled and Homo Black.

CE	BW	WW	YW	MCE	Milk	MWW	Marb	REA	API
12.6	1.7	72.3	96.7	7.3	17.0	53.1	0.21	0.57	128.3



# Blackbird Family



Lot 1A

Heifer



Lot 1B

Heifer

CLEAR WATER SIMMENTALS

CLEAR WATER SIMMENTALS

1A

CLRWTR *Splashing Good Time*

BD. 2/14/21 • ASA#. 3957702 • Purebred Bred Heifer  
Tattoo. J364B • Adj. BW. 93 lbs. • Adj. WW. 732 lbs.

YARDLEY UTAH Y361

sire **W/C RELENTLESS 32C**

MISS WERNING KP 8543U

RGRS SRG TWO STEP 20Z ET

dam **DAF BLACKBIRD C364**

DAF BLACKBIRD A164

1B

CLRWTR *Splashing Good Time*

BD. 2/17/22 • ASA#. 4089898 • Purebred Open Heifer  
Tattoo. K364A • Adj. BW. 74 lbs.

HPF QUANTUM LEAP Z952

sire **WLE COPACETIC E02**

CMFM JOY 022B

RGRS SRG TWO STEP 20Z ET

dam **DAF BLACKBIRD C364**

DAF BLACKBIRD A164

CE	BW	WW	YW	MCE	Milk	MWW	Marb	REA	API
10.7	3.3	82.5	109.0	4.5	15.9	57.2	0.20	0.85	122.4

**AI'd on 3/29 to CLRWTR Clear Advantage, PE to TJ Rage from 6/20/22 to 8/29/22**  
Over the years we have taken great pride in offering an exceptional set of bred females. As you look at her dam, you can see that the consistency of this family is imprinted on the next generation. Bred to our exciting herd sire Clear Advantage, the offspring should be a great asset to your herd; then turn this female into a lead donor and the opportunities are endless.

CE	BW	WW	YW	MCE	Milk	MWW	Marb	REA	API
13.0	1.5	79.9	112.6	6.8	21.1	61.0	0.14	0.77	117.3

The two animals stemming from the DAF Blackbird C364 family should make you excited about the future of the Lot 1 cow. You can follow the history, consistency, resemblance and what the family has done for our program. K364A will not carry on the legacy for many years down the road. The pictures were taken in mid- August, and they have changed a lot. This young lady has a bright future ahead of her in both the show ring and the pasture. We think this female is a complete package.



# Missy Donor



Beshears

Lot 2



**Besh Perspective - Son of Lot 2  
Purchased by JS Simmentals, IA  
2021 Clear Choice Bull Sale**

BESHEARS SIMMENTALS

2

HPF *Missy* C068

BD. 3/23/15 • ASA# 2960141 • Purebred Donor  
Tattoo. C068 • Adj. BW. 88 lbs.

WS A STEP UP X27

sire **RGRS SRG TWO STEP 20Z ET**

WLTR LYDIA 39U ET

CNS DREAM ON L186

dam **WLE MISSY U409**

SHAWNEE MISS 770P

CE	BW	WW	YW	MCE	Milk	MWW	Marb	REA	API
7.3	4.1	78.8	101.2	2.8	18.1	57.4	0.12	0.59	106.1

Straight from the heart of our donor pen we proudly are offering Missy. She has done an awesome Job for us since we have started flushing her not long ago. Last year her heifers averaged over 7,000 in this sale and she produced our high selling bull last spring, going to our friends JS Simmentals in Iowa. We knew from the moment we laid eyes on this powerful female at HPF we had to own her, we just love the depth of body, bone, and foot she stamps the ground with and yet still can make them fancy enough for the show ring. As you can see in the 2 daughters we are offering in this sale. C068 has flushed very well, and we wanted to bring our best so that is why we are offering her to you. Her last 2 IVF flushes averaged 18.5 embryos.



# Missy Family



lot 2A



lot 2B

BESHEARS SIMMENTALS

BESHEARS SIMMENTALS

2A

BESH *Ms Missy* K601

BD. 4/2/22 • ASA#. 4093492 • 3/4 Simmental Open Heifer  
Tattoo. K601 • Adj. BW. 87 lbs.

CONLEY NO LIMIT

*sire* **S&S TSSC LIMITLESS 041H**

HILB AMAZING GRACE E928

RGRS SRG TWO STEP 20Z ET

*dam* **HPF MISSY C068**

WLE MISSY U409

2B

BESH *Ms Milly* K54

BD. 4/21/22 • ASA#. 4093510 • Purebred Open Heifer  
Tattoo. K54 • Adj. BW. 73 lbs.

CCS/WHF OL` SON 48F

*sire* **WHF POINT PROVEN H45**

WHF DELILAH 45D

RGRS SRG TWO STEP 20Z ET

*dam* **HPF MISSY C068**

WLE MISSY U409

CE	BW	WW	YW	MCE	Milk	MWW	Marb	REA	API
7.0	3.5	75.1	103.6	2.8	17.6	55.1	0.25	0.51	101.5

CE	BW	WW	YW	MCE	Milk	MWW	Marb	REA	API
11.1	1.0	81.8	111.3	5.5	20.3	61.1	0.23	0.81	134.4

These two females are fitting examples of the impact C068 can make. Both possess her foot and bone, square and levelness out of their hip, and have plenty of eye appeal. Although big sis is a little deeper bodied and further along in her maturity do not discount K54 for being young, she will blossom.



# Cream Soda Donor



**F27, Daughter of Lot 3  
2018 Class Winner NAILE**



**F35, Daughter of Lot 3  
2019 Class Winner Kentucky Beef Expo**

BESHEARS SIMMENTALS & HEGE CATTLE CO



## HPF Cream Soda B334

BD. 2/6/14 • ASA#. 2864594 • Purebred Bred Cow  
Tattoo. B334 • Adj. BW. 80 lbs.

HEADS UP 20X ET  
sire **LLSF UPRISING Z925**  
LLSF UNTOUCHABLE U925  
CNS DREAM ON L186  
dam **IC CREAM SODA R56**  
SS JEZABELLE N120

CE	BW	WW	YW	MCE	Milk	MWW	Marb	REA	API
10.7	2.8	78.5	117.0	3.7	22.7	61.9	-0.03	0.80	112.1

### AI'd to WLE Black Mamba on 2/16/22

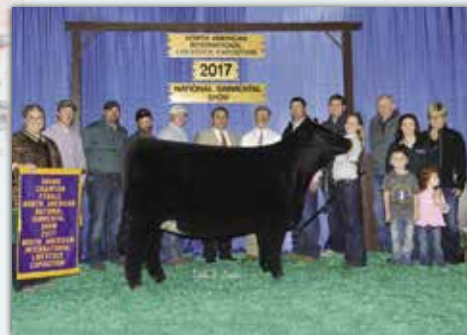
B334 has been a mainstay in our donor pen for many years has produced some exceptionally good calves for us including 2 class winners at Louisville. Her calves are level hiped, deep bodied, sound, attractive, and most of the time extremely hairy. SHE CAN PRODUCE SHOW HEIFERS. She is bred to calve in November to WLE Black Mamba, which I think will be a home run, and the buyer will not have to wait long on their return on investment. She averaged 18 embryos a flush her lasts 2 conventional flushes in 2021.



# Andie Family



Lot 4A



WHF Summer 365C  
Full-Sister to Lots 4A & 4B



Purchased by Cash Rumble in the 2021  
Clear Choice Sale



Lot 4B

BESHEARS SIMMENTALS

BESHEARS SIMMENTALS

4A

BESH *Ms Anne* K59

BD. 2/18/22 • ASA#. 4093478 • Purebred Open Heifer  
Tattoo. K59 • Adj. BW. 91 lbs.

S D S GRADUATE 006X

sire **CCR WIDE RANGE 9005A**

CCR MS APPLE 9332W

MR HOC BROKER

dam **WHF ANDIE 365A**

PRS SUMMER W364

4B

BESH *Ms Alice* KA54

BD. 3/17/22 • ASA#. 4093488 • Purebred Open Heifer  
Tattoo. KA54 • Adj. BW. 92 lbs.

S D S GRADUATE 006X

sire **CCR WIDE RANGE 9005A**

CCR MS APPLE 9332W

MR HOC BROKER

dam **WHF ANDIE 365A**

PRS SUMMER W364

CE	BW	WW	YW	MCE	Milk	MWW	Marb	REA	API
10.5	2.1	85.8	128.4	5.8	20.1	63.0	-0.12	1.07	123.0

CE	BW	WW	YW	MCE	Milk	MWW	Marb	REA	API
10.5	2.1	85.8	128.4	5.8	20.1	63.0	-0.12	1.07	123.0

There is not much we can write that has not already been written about Andie and the legacy she is continuing to build. Many of her daughters have hung banners at every major show in this country, but what is even more impressive in our eyes is seeing and hearing how great her daughters are producing themselves. Most notably her most sought-after daughter WHF Summer 365C produced a \$60k heifer that sold this spring for our partners at Wayward Hill Farms. These 2 females are full sisters to Summer, and we would be naive to say they will accomplish everything Summer has, but there are a lot of the right pieces in place for a great show career and cow career for these two future donors.



# Emberly Family



**SS Emberly E303**  
Dam of Lots 5-8



CLEAR WATER SIMMENTALS & HTP SIMMENTALS

CLEAR WATER SIMMENTALS & HTP SIMMENTALS

**5**

CLRWTR HTP *Amy* K303C

BD. 1/3/22 • ASA#. 4073428 • 3/4 Simmental Open Heifer  
Tattoo. K303C • Adj. BW. lbs.

W/C LOADED UP 1119Y

*sire* **W/C PINNACLE E80**  
MISS WERNING KP 8543U  
PVF INSIGHT 0129

*dam* **SS EMBERLY E303**  
SVF NJC MAGNETIC LDY M25

**6**

CLRWTR HTP *Emmie* K303D

BD. 2/19/22 • ASA#. 4089903 • 3/4 Simmental Open Heifer  
Tattoo. K303D • Adj. BW. 94 lbs.

HPF/HILL UPRISING C104

*sire* **SO REMEDY 7F**  
B&K CREAM SODA 8D  
PVF INSIGHT 0129

*dam* **SS EMBERLY E303**  
SVF NJC MAGNETIC LDY M25

CE	BW	WW	YW	MCE	Milk	MWW	Marb	REA	API
11.8	0.8	71.8	100.9	6.6	26.0	61.8	0.02	0.98	114.7

CE	BW	WW	YW	MCE	Milk	MWW	Marb	REA	API
11.6	1.9	78.9	122.7	6.3	24.2	63.6	-0.04	0.94	110.7

These two half sisters are a true testament to what the Emberly donor is proving in a short amount of time. In just a short amount of time and a small number of various sires, Emberly is looking to make a big impact no matter what she is mated to. These two 2022 females are prime candidates for the show ring. Each are slightly different than the other and we believe the choice will be difficult on which one to take. Of course K303D is backed by the popular champion SO Remedy, and K303C is out of the full brother to Bankroll, W/C Pinnacle. Both are available at the Clear Choice Sale; you just have to make your choice.



# Emberly Family



Heifer

lot 7



Heifer

lot 8

CLEAR WATER SIMMENTALS & HTP SIMMENTALS

CLEAR WATER SIMMENTALS & HTP SIMMENTALS

7

## CLRWTR HTP *Emberly* J303

BD. 2/12/21 • ASA#. 3957746 • 3/4 Simmental Bred Heifer  
Tattoo. J303 • Adj. BW. 90 lbs. • Adj. WW. 700 lbs.

CCR COWBOY CUT 5048Z

sire **WS PROCLAMATION E202**

WS MISS SUGAR C4

PVF INSIGHT 0129

dam **SS EMBERLY E303**

SVF NJC MAGNETIC LDY M25

8

## CLRWTR HTP *Emberly* H303B

BD. 9/15/20 • ASA#. 3900091 • 3/4 Simmental Bred Cow  
Tattoo. H303B • Adj. BW. 82 lbs. • Adj. WW. 658 lbs.

JS SURE BET 4T

sire **FBFS WARSAW 068W**

FBFS SLOW MELT 089S

PVF INSIGHT 0129

dam **SS EMBERLY E303**

SVF NJC MAGNETIC LDY M25

CE	BW	WW	YW	MCE	Milk	MWW	Marb	REA	API
10.8	1.7	89.7	132.1	6.7	33.1	77.9	0.28	0.95	137.6

AI'd on 4/1 to CLRWTR Clear Advantage, PE to TJ Rage from 6/20/22 to 8/29/22  
Emberly is a broody female that you will be excited for her to lay down and calve to Clear Advantage. J303 is functional, deep, wide hiped, and stout. All the characteristics that make her the cattlemen's kind. J303 being a Proclamation has some top EPDs being in the top 2% for MM and MWW, top 10% for WW and REA and the top 20% for YW. This homo polled, homo black female will produce a future herd sire and be an awesome cow.

CE	BW	WW	YW	MCE	Milk	MWW	Marb	REA	API
13.1	0.8	74.4	105.4	8.9	26.2	63.4	-0.09	0.90	113.6

AI'd on 12/29/21 to CLRWTR Clear Advantage. Due by sale time  
Warsaw has made a lot of really nice Simmental offspring over the years, but we believe his mating to SS Emberly might take the cake for his best sire group. A full sib to H303B sold in the bull sale for \$16,500 to Barron Simmentals. Her Pinnacle son sold to Evan Corneclius here in Indiana. H303B is a load of bred heifer with bone and power and exhibits internal dimension. If you are looking for a future donor cow for your operation, we strongly believe this might be what you are looking for.



# Ethel Family



Lot 9A



Full-sister to Lots 9A & 9B  
Purchased by Olivia Kuhn  
2020 Clear Choice Female Sale



Lot 9B

BESHEARS SIMMENTALS

9A

BESH *Ms Ethel* J20

BD. 3/1/21 • ASA#. 3930240 • Purebred Bred Heifer  
Tattoo. J20 • Adj. BW. 95 lbs.

BESHEARS SIMMENTALS

9B

BESH *Ms Ethel* J54

BD. 4/7/21 • ASA#. 3930257 • Purebred Bred Heifer  
Tattoo. J54 • Adj. BW. 84 lbs.

W/C EXECUTIVE ORDER 8543B

sire **OBCC CMFM DEPLORABULL D148**

LAZYH/ADKINS BLKSTAR Z15

BESHEARS TRUE MANT7

dam **BESH ETHEL W24**

BESHEARS NEW YEARS EVE

Lot 9A: WHF Point Proven on 4/19/22

Lot 9B: CLRWTR Clear Advantage (sexed heifer) on 4/20/22

These three flush mate daughters of Ethel come from the top of our bred heifer pen. Yes, I know we are only offering 2, but we are keeping one for ourselves and there is not a nickels worth difference between them. Stout, big footed, deep bodied, and sound. Ask our friend Michael Kuhn about his flush mate to these, you must appreciate the consistency of this mating. If you are the high bidder, I would recommend you double down because everyone knows 2 is better than 1.

CE	BW	WW	YW	MCE	Milk	MWW	Marb	REA	API
11.2	2.1	68.8	103.0	6.4	23.1	57.4	-0.05	0.77	116.9



# Ethel Family



Lot 10



Lot 11

BESHEARS SIMMENTALS

10

BESH *Ms Ethel* KAM1

BD. 1/13/22 • ASA#. 4093473 • Purebred Open Heifer  
Tattoo. KAM1 • Adj. BW. 95 lbs.

BESHEARS SIMMENTALS

11

BESH *Ms Ethel* JD12

BD. 12/9/21 • ASA#. 4093544 • Purebred Bred Heifer  
Tattoo. JD12 • Adj. BW. 82 lbs.

HPF QUANTUM LEAP Z952  
sire **WLE COPACETIC E02**  
CMFM JOY 02ZB  
BESHEARS TRUE MANT7  
dam **BESH ETHEL W24**  
BESHEARS NEW YEARS EVE

Well, it was Ethel's time this last Winter and she is no longer with us. We have a couple of embryos in cows and in the tank, but realistically this could be your last opportunity to buy an open heifer out her. The reason she was so coveted here, along with a good show career, was her consistency of progeny. And if you look at the 4 sisters selling out of her it is easy to see. Always, sound, deep bodied, eye appealing and complete. These 2 females have a lot of gas left in the tank and could be fun on the tan bark.

CE	BW	WW	YW	MCE	Milk	MWW	Marb	REA	API
11.1	3.3	77.0	111.9	6.6	22.5	60.9	-0.04	0.91	114.3

BESHEARS SIMMENTALS

12

BESH *Ms Tina*

BD. 2/2/22 • ASA#. 4093484 • Purebred Open Heifer  
Tattoo. KZ35 • Adj. BW. 96 lbs.

WLE COPACETIC E02  
sire **RP/BCR EMINENCE H005**  
RP/MP BUILT TO LOVE A021  
BESHEARS TRUE MANT7  
dam **BESH MS TRUEMAN Z35**  
BESHEARS NEW YEARS EVE



Lot 12

CE	BW	WW	YW	MCE	Milk	MWW	Marb	REA	API
10.4	1.9	71.9	106.9	5.6	21.7	57.6	0.05	0.80	116.9

If you like them bold you found what you are looking for. Soggy, sound, and hairy. KZ35 also has an excellent disposition. Her dam is a full sister to Ethel and continues to do a great job for us.



# Lotsa Love Family



CLRWTR Losta Luv G422A  
Dam of Lots 13A & 13B



CLEAR WATER SIMMENTALS

CLEAR WATER SIMMENTALS

13A

CLRWTR *Luv* J422E

BD. 1/2/21 • ASA#. 3893516 • Purebred Bred Heifer  
Tattoo. J422E • Adj. BW. 89 lbs.

JS SURE BET 4T

sire **FBFS WARSAW 068W**

FBFS SLOW MELT 089S

SC PAY THE PRICE C11

dam **CLRWTR LOSTA LUV G422A**

HPF LOSTA LOVE B422

13B

CLRWTR *Lotsa Luv* J422F

BD. 1/29/21 • ASA#. 3957747 • Purebred Bred Heifer  
Tattoo. J422F • Adj. BW. 86 lbs. • Adj. WW. 739 lbs.

JS SURE BET 4T

sire **FBFS WARSAW 068W**

FBFS SLOW MELT 089S

LLSF UPRISING Z925

dam **CLRWTR LOSTA LUV G422E**

HPF LOSTA LOVE B422

CE	BW	WW	YW	MCE	Milk	MWW	Marb	REA	API
11.2	1.4	76.3	107.0	7.4	22.8	60.9	-0.01	0.82	115.1

AI'd on 5/10 to CLRWTR Clear Advantage, PE to TJ Rage from 6/20/22 to 8/29/22  
Luv goes back to the cow maker Lotsa Love. B422 sold in the 2019 Clear Choice sale for \$23,000 going to Iowa to Shy 5 Simmental and KD Simmental. This Warsaw is wide, deep with muscle thru rear end and down though her middle. A cow in the making just take her home and calve her out. With Warsaw in her pedigree, this female is built for longevity.

CE	BW	WW	YW	MCE	Milk	MWW	Marb	REA	API
12.7	0.5	78.5	112.6	8.5	24.6	63.8	-0.05	0.79	116.3

AI'd on 4/15 to CLRWTR Clear Advantage, PE to TJ Rage from 6/20/22 to 8/29/22  
Don't over look the Warsaw females; they will be maternal with a good udder placement. J422F exhibits length of body with a strong top and good on the ground.



# Red Jewel Family



**EKHCC Red Jewel 760**  
Dam of Lots 14 & 15



CLEAR WATER SIMMENTALS

CLEAR WATER SIMMENTALS

14

## CLRWTR *Jewels Secret* J760

BD. 2/15/21 • ASA#. 3957688 • Purebred Bred Heifer  
Tattoo. J760 • Adj. BW. 80 lbs. • Adj. WW. 654 lbs.

GWS EBONY'S TRADEMARK 6N  
sire **REMINGTONSECRETWEAPON185**  
AUBREYS BLACKBLAZE II 5T  
SVF/NJC BUILT RIGHT N48  
dam **EKHCC RED JEWEL 760**  
EKHCC CROWN JEWEL 523

15

## CLRWTR *Black Jewel* K760B

BD. 1/3/22 • ASA#. 4073426 • Purebred Open Heifer  
Tattoo. K760B • Adj. BW. 89 lbs.

W/C LOADED UP 1119Y  
sire **W/C PINNACLE E80**  
MISS WERNING KP 8543U  
SVF/NJC BUILT RIGHT N48  
dam **EKHCC RED JEWEL 760**  
EKHCC CROWN JEWEL 523

CE	BW	WW	YW	MCE	Milk	MWW	Marb	REA	API
9.3	2.7	74.7	107.6	4.6	22.4	59.7	0.04	0.65	118.8

AI'd on 4/6 to WS Pinnacle, PE to TJ Rage from 6/20/22 to 8/29/22

J760 is one that fits in easily as a top bred prospect. Secret Weapon has made Red Jewel progeny stout, wide based with muscle and power. Secret Weapon semen is hard to find making his daughters a real jewel to have. Safe AI resulting calf could be a red baldy.

CE	BW	WW	YW	MCE	Milk	MWW	Marb	REA	API
8.9	2.5	73.1	105.5	5.1	25.1	61.6	0.00	0.88	116.4

If you haven't been paying attention to the Red Jewel progeny over the last several years, you must be living under a rock. Perhaps one of the most successful red donors to ever grace the Simmental breed, Red Jewel doesn't seem to miss. H760B his the keeping kind that offers many strong factors; a tremendous cow family backed by years of genetic selection, structural soundness for longevity, and great phenotype with loads of eye appeal. Homo polled.



# Open Heifers

CLEAR WATER SIMMENTALS



16

## CLRWTR *Ms Sugar* K4G

BD. 1/26/22 • ASA#. 4089901 • Purebred Open Heifer  
Tattoo. K4G • Adj. BW. 88 lbs.

W/C DOUBLE DOWN 5014E  
*sire* **WHF/JS/CCS DOUBLE UP G365**  
WHF SUMMER 365C  
CDI INNOVATOR 325D  
*dam* **CLRWTR SUGA H4C**  
WS MISS SUGAR C4

CE	BW	WW	YW	MCE	Milk	MWW	Marb	REA	API
12.8	1.2	83.9	123.8	6.5	28.8	70.7	0.27	0.92	140.7

The Sugar cow family has seen much success over the last three to four years with tremendous herd sires in individual operations and semen that is being marketed via owners and bull studs. In the 2021 Clear Choice Bull Sale an Innovator son sold for \$24,000 to Schooley Cattle. In the 2022 Clear Choice Customer Sale we sold a Vantage Point who is roaming the pastures in Virginia for the proud owner Rhonda Cox. Most breeders with C4 progeny keep the daughters in their herd. K4G is a product of a daughter by Innovator and Sugar C4 then added in the sire of Double Up. This open no doubt will have a promising future no matter what direction of program. The genetic proof and the majority of the EPDs are in the top. All indicators point nothing but positive. Sugar K4G has the look with a great phenotype, structure, EPDs and body type. Her full sister will be our donation heifer to the American Simmental Simbrah Foundation in 2023.

CLEAR WATER SIMMENTALS



17

## CLRWTR *Holly* K35

BD. 1/2/22 • ASA#. 4073429 • 3/4 Simmental Open Heifer  
Tattoo. K35 • Adj. BW. 88 lbs.

HPF/HILL UPRISING C104  
*sire* **SO REMEDY 7F**  
B&K CREAM SODA 8D  
ACLL FORTUNE 393D  
*dam* **SJF HOLLY**  
HOFFMAN LLL PRIDE 7645

CE	BW	WW	YW	MCE	Milk	MWW	Marb	REA	API
11.6	0.9	76.8	119.9	5.1	19.1	57.4	0.00	0.63	106.1

We are proud of the entire offering but we feel the opens are consistent as ever. Retaining females like Holly will improve your herd and make it easier to make breeding decisions. We have been in the Simmental see stock business for years and strive to market our best to faithful customers and new ones each year. Drew selected this female as a pregnancy out of the Bruhn dispersal and her first calf looks like a hit. Remedy crossed well. Add profit and genetic merit.

CLEAR WATER SIMMENTALS



18

## CLRWTR *Red Eyes* K648

BD. 1/4/22 • ASA#. 4089904 • Purebred Open Heifer  
Tattoo. K648 • Adj. BW. 78 lbs.

W/C FORT KNOX 609F  
*sire* **SS FORT HAYES H618**  
STF MISS ZW87  
TNT RED EYE A212  
*dam* **BCLR MISS RED EYE D648**  
BCLR MISS VEGAS A327

CE	BW	WW	YW	MCE	Milk	MWW	Marb	REA	API
14.8	-1.1	62.6	94.5	7.5	23.3	54.6	0.17	0.70	132.0

Red Eyes is future cow prospect.. K648 has the base width, depth and shape to have a good future as a top end cow. K648 catches your attention. On paper this January female is the top 10 for CE and BW. On the top side ZW87 and the bottom a very productive Bichler cow. In the Clear Choice Customer sale the Barron's sold top notch ZW87 heifer. Don't overlook one of the few red females in the sale.



# Open Heifers

CLEAR WATER SIMMENTALS

19

## CLRWTR *Sweet Wine* K93

BD. 1/15/22 • ASA#. 4089902 • Purebred Open Heifer  
Tattoo. K93 • Adj. BW. 84 lbs.

LCDR WITNESS 541C

sire **LCDR FAVOR 149F**

WS MISS SUGAR C4

MR CCF VISION

dam **CLRWTR FINE WINE E93B**

HTP SVF DEW THE STROKE

CE	BW	WW	YW	MCE	Milk	MWW	Marb	REA	API
10.6	2.1	95.4	146.0	5.0	25.9	73.5	0.12	1.19	134.2

K93 is an impressive January heifer and as you project her out as a heavy bred or cow. K93 is sired by the Schooley herd sire, the Sugar son, Favor. Favor has females in production and Roman speaks very highly. Sweet Wine is backed by CCF Vision and Dew The Stroke. The homo polled homo black open reads good on paper being in the top 5% for WW, REA and the top 10% YW.



BESHEARS SIMMENTALS

20

## BESH *Ms Beyonce* KCL2

BD. 1/29/22 • ASA#. 4093458 • Purebred Open Heifer  
Tattoo. KCL2 • Adj. BW. 82 lbs.

MR TR HAMMER 308A ET

sire **TMAS CAN`T TOUCH THIS 8531F**

J6RA 606B

W/C BF INNOCENT MAN

dam **BESH MS BEYONCE ECL2**

BESH MS BEYONCE CZL2

CE	BW	WW	YW	MCE	Milk	MWW	Marb	REA	API
6.8	3.8	74.2	112.4	2.8	17.8	54.9	0.00	0.92	109.1

KCL2 is one of the best built, boldest ribbed, attractive made open females we have to offer. Her Dam is an up-and-coming donor at our place, and it is easy to see why. She is a great option for a jr. looking to campaign a show heifer.



CLEAR WATER SIMMENTALS

21

## CLRWTR *Shelby* K283

BD. 1/30/22 • ASA#. 4073425 • 3/4 Simmental Open Heifer  
Tattoo. K283 • Adj. BW. 82 lbs.

HTP/SVF DURACELL T52

sire **HPF QUANTUM LEAP Z952**

RP/MP RIGHT TO LOVE 015U

SLC SOONER 101M

dam **MOORE SHELBY 283Y**

WLE CNS SHELBY T335

CE	BW	WW	YW	MCE	Milk	MWW	Marb	REA	API
11.7	1.5	78.0	110.1	5.8	15.1	54.0	0.02	0.81	95.7

Shelby is a first class female, and some of that reason is the backing of several champion animals in the pedigree. This heifer should catch you attention with her long extended front end plus being smooth in her overall appearance. We are extremely pleased to breed and raise heifers like Shelby.





# Open Heifers



Lot 22

CLEAR WATER SIMMENTALS

22

## CLRWTR *Ebony* K410A

BD. 2/16/22 • ASA#. 4089897 • Purebred Open Heifer  
Tattoo. K410A • Adj. BW. 83 lbs.

CCR ANCHOR 9071B

sire **LLSF VANTAGE POINT F398**

HPF RITE 2 LUV 398D

HPF/HILL UPRISING C104

dam **CLRWTR EBONY G410**

SVF/NJC EBONY W410

CE	BW	WW	YW	MCE	Milk	MWW	Marb	REA	API
14.1	0.3	75.4	117.8	7.7	25.6	63.3	0.24	0.77	132.7

We utilized Vantage Point heavily purchasing spring breeding rights from Woodlawn Farms and have been pleased with the females. In the spring bull sale two of our top selling bulls went to James Skipper of Florida and to JS Simmentals of Iowa. We sold 13 Vantage Point sons and they were the high selling sire group. I don't think you will pass by K410A, with her look and your eyes, all should be on the same page sale day.



Lot 23

CLEAR WATER SIMMENTALS

23

## CLRWTR *Seren* K74C

BD. 2/21/22 • ASA#. 4089900 • Purebred Open Heifer  
Tattoo. K74C • Adj. BW. 88 lbs.

WS PILGRIM H182U

sire **LKCC BOLD VENTURE 194F**

MS CRYSTEEL VOLTAGE 194A

W/C LOADED UP 1119Y

dam **CLRWTR SERENA D74R**

HF SERENA

CE	BW	WW	YW	MCE	Milk	MWW	Marb	REA	API
9.5	1.9	74.5	101.4	4.4	20.3	57.5	0.14	0.89	121.9

On picture day in mid-August, K74C was one of Doug's favorites. If you have some patience, this girl could pass many by in the ring. K74C was greener that day but on sale day I believe you will find that she has changed a lot. The face will catch your attention however her completeness, balance and overall style will keep you looking. Get in early on the Bold Venture bandwagon. Bold Venture was a Champion many times and was Reserve Senior Champion at the Cattleman's Congress. The Massey family sold Bold Venture to C4 operation.



Lot 24

CLEAR WATER SIMMENTALS

24

## CLRWTR *Belle* K5B

BD. 2/23/22 • ASA#. 4089896 • Purebred Open Heifer  
Tattoo. K5B • Adj. BW. 83 lbs.

TJ TEARDROP 783F

sire **TJ RAGE 437H**

TJ 92C

MR HOC BROKER

dam **JS SOUTHERN BELLE 5B**

JS FLATOUT FLIRTY 46T

CE	BW	WW	YW	MCE	Milk	MWW	Marb	REA	API
10.4	1.4	72.4	104.6	5.3	31.9	68.1	0.05	0.66	127.4

We have always have been excited about this Rage daughter. Several times Jeff has come in from work and always is asking what is K5B, so now you get the picture this is his favorite. Doug and I picked TJ Rage out 250 bulls at the Triangle J bull sale where his full brother was high seller. In the 2019 sale daughters sold for \$10,500 going to Hadden Simmentals and the other to long time and faithful customer Alvin Lilley for \$4,600. A female such as Belle needs to be in the ring.



# Open Heifers

BESHEARS SIMMENTALS

25

## BESH *Ms Butterfly* K67

BD. 3/3/22 • ASA#. 4093499 • Purebred Open Heifer  
Tattoo. K67 • Adj. BW. 84 lbs.

HOOK`S BEACON 56B

sire **CLRS GUARDIAN 317G**

CLRS ALWAYS XCELLENT

DOZER

dam **HPF/PCCC BUTTERFLY 302E**

HILB/RUBY BUTTERFLY B555



Lot 25

CE	BW	WW	YW	MCE	Milk	MWW	Marb	REA	API
12.2	-0.2	91.3	141.5	6.4	23.5	69.1	0.55	0.93	165.4

K67 is a little different flavor from the rest of our opens. She is in the top 4% API, 2% TI, 10% wean, yearling, and ADG, yet remaining in the top 20% for BW. I am not saying she is a show heifer, but she still comes in and attractive package out of our Butterfly donor. If you're looking to play both sides of the fence between the show and numbers world, look no further.

BESHEARS SIMMENTALS

26

## BESH *Ms Miley* KB27

BD. 3/16/22 • ASA#. 4093463 • Purebred Open Heifer  
Tattoo. KB27 • Adj. BW. 80 lbs.

MR CCF 20-20

sire **MR CCF CLARIFIED**

MISS CCF SHEZA SUPERSTAR

MR NLC UPGRADE U8676

dam **BESH MS MILEY BX27**

BESH MS MEMORY X27



Lot 26

CE	BW	WW	YW	MCE	Milk	MWW	Marb	REA	API
11.7	1.6	71.6	105.8	4.4	13.1	48.8	0.11	0.95	123.5

Intriguing option if you are looking for a show heifer. KB27 is a fault free female, from the ground up. Deep, Sound, attractive. I guess if you want to poke a hole in her you could call her too easy doing because her dam did such an excellent job. Luckily for you her dam is in the sale too, bred up early and could easily produce another one like this.

BESHEARS SIMMENTALS

27

## BESH *Ms Kenya* KB2

BD. 4/3/22 • ASA#. 4093489 • Purebred Open Heifer  
Tattoo. KB2 • Adj. BW. 70 lbs.

WLE COPACETIC E02

sire **RP/BCR EMINENCE H005**

RP/MP BUILT TO LOVE A021

AJE/HS/MBCC SILVERSMITH

dam **BESH MS KENYA B2**

LOUKEN KENYA 510PP



Lot 27

CE	BW	WW	YW	MCE	Milk	MWW	Marb	REA	API
11.3	1.2	70.9	104.1	6.4	19.2	54.6	0.07	0.76	120.0

KB2 is back by show families. Her grand dam Kenya was a past Kentucky State Fair Champion and Her Sire Eminence is a maternal sib to the 2 High selling purebreds at Buck Creek Ranch last December both commanding north of \$100k. This little April will be one of the sharpest open heifers of the sale and a great option for a junior prospect.



# Bred Heifers



Lot 28

28

## CLRWTR *Sheza Star* J902

CLEAR WATER SIMMENTALS

BD. 1/4/21 • ASA#. 3957740 • Purebred Bred Heifer  
Tattoo. J902 • Adj. BW. 73 lbs. • Adj. WW. 667 lbs.

CNS DREAM ON L186

sire **WLE UNO MAS X549**

SHAWNEE MISS 770P

FBFS WARSAW 068W

dam **CLRWTR SHEZA GEM Z902J**

SVF SHEZA STAR N902

CE	BW	WW	YW	MCE	Milk	MWW	Marb	REA	API
14.0	-0.8	64.9	93.4	5.6	24.2	56.7	0.16	0.69	129.0

AI'd on 4/3 to WHF/JS/CCS Double Up, PE to TJ Rage from 6/20/22 to 8/29/22. Safe to AI date.

I can see many breeders liking what they see in J902. Here a bred heifer coming with that sleek front end plus the style and balanced from end to end. Another Warsaw daughter destined to make an outstanding cows. Uno Mas adds to the package as well.



Lot 29

29

## CLRWTR *Bossy* J9492

CLEAR WATER SIMMENTALS

BD. 1/15/21 • ASA#. 3957739 • Purebred Bred Heifer  
Tattoo. J9492 • Adj. BW. 89 lbs. • Adj. WW. 670 lbs.

YARDLEY UTAH Y361

sire **W/C RELENTLESS 32C**

MISS WERNING KP 8543U

LBS THE FOREMAN 702T

dam **SILVERSTONE CF MSFOREMAN**

JF EBONYS JOY 612S

CE	BW	WW	YW	MCE	Milk	MWW	Marb	REA	API
10.5	2.4	71.6	97.2	3.4	19.4	55.2	0.21	0.83	122.0

AI'd on 5/2 to WHF/JS/CCS Double Up, PE to TJ Rage from 6/20/22 to 8/29/22

J9492 is a deep, functional, deep sided and will be making a nice udder to be maternal. Bossy is striking with a blaze face. Over the years in the business the Joy line has had the biggest impact in our program whether bull or females sales.



Lot 30



GRANDDAM

30

## CLRWTR *Love Bug* J334

CLEAR WATER SIMMENTALS

BD. 1/29/21 • ASA#. 3957696 • Purebred Bred Heifer  
Tattoo. J334 • Adj. BW. 93 lbs. • Adj. WW. 760 lbs.

HOOK`S BOZEMAN 8B

sire **MR SR 71 RIGHT NOW E1538**

MISS SR C1538

W/C BANKROLL 811D

dam **B&K/IVS ROLLING IN LOVE 334G**

HPF RIGHT TO LOVE Z338

CE	BW	WW	YW	MCE	Milk	MWW	Marb	REA	API
9.6	1.4	94.3	140.1	4.7	28.8	75.9	0.15	1.12	133.1

AI'd on 3/29 to WHF/JS/CCS Double Up, PE to TJ Rage from 6/20/22 to 8/29/22. Safe to AI date.

We did not use a lot of Right Now in our program, but what we did use we have been very satisfied with. The Right Now bull is impressive and has grown into a really nice older bull. This baldie female goes back to Right to Love Z338. She has an extended front one third so he will catch your attention.



# Bred Heifers

CLEAR WATER SIMMENTALS

31

## CLRWTR *Knockout* J71

BD. 2/4/21 • ASA# 3957732 • Purebred Bred Heifer  
Tattoo. J71 • Adj. BW. 89 lbs. • Adj. WW. 680 lbs.

JS SURE BET 4T  
*sire* **FBFS WARSAW 068W**  
FBFS SLOW MELT 089S  
GLS INTEGRATE Z3  
*dam* **CLRWTR KNOCKOUT C71C**  
HPF MISS KNOCKOUT X071

CE	BW	WW	YW	MCE	Milk	MWW	Marb	REA	API
14.3	0.5	77.2	114.1	8.6	21.1	59.6	-0.17	0.95	116.4

AI'd on 5/31 to CLRWTR Clear Advantage (sexed heifer), PE to TJ Rage from 6/20/22 to 8/29/22

As we have mentioned, Warsaw has done a lot of really good things for our program. We still go back and utilize him. With Warsaw daughters like J71, we know that we are offering solid Simmental genetics with longevity. J71 is long strides, long spited, and has a great profile. Her dam is a half sister to the great Serena; only adding to the value of this female.



Lot 31

CLEAR WATER SIMMENTALS

32

## CLRWTR *Giggles* J91

BD. 2/16/21 • ASA# 3957730 • Purebred Bred Heifer  
Tattoo. J91 • Adj. BW. 84 lbs. • Adj. WW. 753 lbs.

BAR CK HUNTER 3006A  
*sire* **KBHR SNIPER E036**  
KBHR C078  
CDI MAINLINE 265D  
*dam* **2E GIGGLES 91G**  
RUBY SWC BIANCA B450

CE	BW	WW	YW	MCE	Milk	MWW	Marb	REA	API
15.4	-0.6	82.3	126.1	7.5	27.3	68.4	0.32	0.97	156.7

AI'd on 4/14 to WS Pinnacle, PE to TJ Rage from 6/20/22 to 8/29/22. Safe to AI date.

We selected Giggles's dam from the Schmidt family out of the South Dakota Source Sale. J91 is a good one to make sure is on your list. The Sniper females always are the same productive and good. In the 2020 sale a Sniper x Lotsa Love commanded \$7,200 to a loyal customer Rondal and Judy Dawson. The paper work on J91 reads top 10% for CE, top 15% for BW, CW, API and TI. All the EPDs read well. The resulting calf has potential to be a red baldy.



Lot 32

BESHEARS SIMMENTALS

33

## BESH *Ms Diva* JX25

BD. 3/5/21 • ASA# 3930221 • Purebred Bred Heifer  
Tattoo. JX25 • Adj. BW. 85 lbs. • Adj. WW. 786 lbs.

CCR ANCHOR 9071B  
*sire* **LLSF VANTAGE POINT F398**  
HPF RITE 2 LUV 398D  
BLACK BEAR  
*dam* **BESH MS DIVA X25**  
J2 MS. DIVAT04

CE	BW	WW	YW	MCE	Milk	MWW	Marb	REA	API
11.4	1.6	70.9	102.2	5.9	21.1	56.5	0.16	0.74	118.6

PE to CLRWTR Clear Advantage from 5/1 to 7/1/22. Confirmed Safe

Continuing the exciting set of bred females here at the Clear Choice, we are proud to offer this Vantage Point x Diva female. JX25 is long, level, deep bodied, and a great hip; everything she needs to be in it for the long haul. Her calf by Clear Advantage will add great value to this female. You will not be disappointed.



Lot 33



# Bred Heifers

CLEAR WATER SIMMENTALS



34

## CLRWTR *Clair* J38

BD. 3/15/21 • ASA#. 3957743 • 3/4 Simmental Bred Heifer  
Tattoo. J38 • Adj. BW. 88 lbs. • Adj. WW. 734 lbs.

LLSF UPRISING Z925

sire **HPF/HILL UPRISING C104**

RP/MP RIGHT TO LOVE 015U

CIRCLET ANTOINETTES STAR

dam **LEGENDS STAR**

SS WYONA

CE	BW	WW	YW	MCE	Milk	MWW	Marb	REA	API
11.4	1.7	72.3	108.7	3.3	20.2	56.4	0.14	0.65	108.0

AI'd on 4/13 to CLRWTR Clear Advantage, PE to TJ Rage from 6/20/22 to 8/29/22.  
Safe to AI date.

Clair's grandam is a cow we purchased from Sanders Ranch and goes back to OCC Legend and Goldmine plus add in Breath Taker. Don't over look J38 sale day, Clair looked good on that August picture day and will look even better October 22nd.



35

## CLRWTR *Better Yet* J302

BD. 4/4/21 • ASA#. 3957691 • Purebred Bred Heifer  
Tattoo. J302 • Adj. BW. 90 lbs. • Adj. WW. 684 lbs.

LLSF UPRISING Z925

sire **HPF/HILL UPRISING C104**

RP/MP RIGHT TO LOVE 015U

HOOK'S BROADWAY 11B

dam **CLRWTR WAY BETTER E302**

ELLINGSON MS JOKER N302

CE	BW	WW	YW	MCE	Milk	MWW	Marb	REA	API
7.0	3.8	70.5	111.6	4.0	24.5	59.7	0.10	0.69	113.9

AI'd on 6/20 to CLRWTR Clear Advantage, PE to TJ Rage from 6/20/22 to 8/29/22  
J302 is a Saban that goes back to a Hooks Taruras. This bred exhibits a long body and tidy neck and front. A heifer that includes some power however is smooth made.



**Besh Ms Soda JFM1**

Champion Simmental Virginia Beef Expo  
Congratulations Colt Thomas  
Purchased 2021 Clear Choice Female Sale



**Besh Ms Firefly JN96**

Reserve Overall Montgomery County Showdown  
Congratulations Charity Moore  
Purchased 2021 Clear Choice Female Sale



# Fall Cow-Calf Pairs



Dam of Lot 36

*Hacfrer*

*Lot 36*

CLEAR WATER SIMMENTALS

36

CLRWTR *Princess* H75B

BD. 9/7/20 • ASA# 3858609 • 5/8 Simmental Cow-Calf Pair  
Tattoo. H75B • Adj. BW. 84 lbs. • Adj. WW. 591 lbs.

*sire* CCR ANCHOR 9071B  
**LLSF VANTAGE POINT F398**

HPF RITE 2 LUV 398D

MR HOC BROKER

*dam* **HARA`S SULL PRINCESS 03**

HARAS HAIRIETTA CLONE H4W

**Lot 36A: Heifer Calf by WS Proclamation • BD: 9/1/22 • BW: 83 lbs.**

Hara's SULL Princess 7503 was campaigned successfully by the Greenhorn family and took home a lot of banners. She won the North American, the World Beef Expo, the Illinois & KY State Fairs, and the Ohio Junior Preview just to name a few. Knowing the impact this female would have in the future we purchased some of the first embryos available. This picture doesn't do this female justice - she is exceptional. She has a future champion on her side with her heifer calf by Proclamation.

CE	BW	WW	YW	MCE	Milk	MWW	Marb	REA	API
12.2	0.3	68.1	101.8	6.0	19.8	53.8	0.15	0.71	109.1



# Fall Cow-Calf Pairs



**Lot 37A: Heifer Calf by WS Proclamation • BD: 9/1/22 • BW: 67 lbs.**

As you are looking through this pedigree there should be a lot of names you should like – Uno Mas, Oracle, Milestone, and Basic Instinct. The 457 cow of Dave Zeis’s was easy to find as you looked through his herd. She was easily the type and kind of cow that our operations like. The progeny tracing back through those initial flushes have sold well nomatter what sale. In the 2018 sale a Saban daughter for \$7,500. At the Kentucky Beef Expo the high selling bull was purchased by Allen Edwards. The sale results have been notable and will continue to be through the generations. Look at the mass and power added by Milestone. The original cow Basic Instinct New Look has a perfect udder.

CLEAR WATER SIMMENTALS & HTP SIMMENTALS

**37** CLRWTR HTP *Lookin Good*

BD. 9/6/20 • ASA#. 4089910 • Purebred Cow-Calf Pair  
Tattoo. H457 • Adj. BW. 90 lbs.

CNS DREAM ON L186  
sire **WLE UNO MAS X549**  
SHAWNEE MISS 770P  
HILB ORACLE C033R  
dam **CLRWTR HTP LOOKING GOOD**  
CLRWTR HTP LOOKING GOOD

CE	BW	WW	YW	MCE	Milk	MWW	Marb	REA	API
8.7	2.3	79.9	108.9	2.3	19.1	59.0	0.20	0.58	123.8

CLEAR WATER SIMMENTALS

**38** CLRWTR *Favorite Shade* H5105Z

BD. 9/25/20 • ASA#. 4089911 • Purebred Cow-Calf Pair  
Tattoo. H5105Z • Adj. BW. 83 lbs.

LCDR WITNESS 541C  
sire **LCDR FAVOR 149F**  
WS MISS SUGAR C4  
LRS TURNING POINT 3117A  
dam **CLRWTR SHADES C5105N**  
CLRWTR JOYS SHADES

CE	BW	WW	YW	MCE	Milk	MWW	Marb	REA	API
9.5	1.9	94.2	149.9	5.2	29.4	76.5	0.12	1.24	138.2

**Lot 38A: Bull Calf by FBFS Warsaw • BD: 8/12/22 • BW: 83 lbs.**

In several other footnotes we mention the 5105 Joy donor. We have several, many daughters in our herd. 5105Z is a solid and typical daughter being wide based, lots of belly, maternal and easy to look at and will make it for the long haul. Don't forget fertility.





# Fall Cow-Calf Pairs

CLEAR WATER SIMMENTALS

39

## CLRWTR *Liberty* H5105S

BD. 9/5/20 • ASA#. 3900081 • Purebred Bred Heifer  
Tattoo. H5105S • Adj. BW. 95 lbs. • Adj. WW. 755 lbs.

YARDLEY UTAH Y361

sire **W/C RELENTLESS 32C**

MISS WERNING KP 8543U

HOOK`S BROADWAY 11B

dam **CLRWTR LADY LIBERTY**

CLRWTR LADY LUCK Y5105E

CE	BW	WW	YW	MCE	Milk	MWW	Marb	REA	API
8.3	2.8	81.0	113.8	3.4	23.0	63.5	0.16	0.87	123.7

**Lot 39A: Bull Calf by WS Proclamation • BD: 9/4/22 • BW: 95 lbs.**

You don't have to wait to see what this female will do for you because by the time you arrive at the sale, she will have a calf at her side by WS Proclamation. We have been really pleased with our Proclamation calves, and have used him on a variety of females. Of course, as you look back through this pedigree you will find Lady Luck who was a banner winner and an important donor female for us. This female has genetic worth that will last for years.



Lot 39

40

## BESH *Ms Wisconsin* H10N

BD. 9/5/20 • ASA#. 4007702 • Purebred Bred Heifer  
Tattoo. H10N • Adj. BW. 91 lbs.

MR HOC BROKER

sire **WHEATLAND BULL 4107B**

WHEATLAND LADY 742T

TRIPLE C MAJIC MAN M211

dam **TRIPLE C MISS WISCONSIN**

GRACE N10

CE	BW	WW	YW	MCE	Milk	MWW	Marb	REA	API
11.1	3.2	75.3	114.1	6.1	30.1	67.7	-0.14	0.95	110.3

**CLRWTR Clear Advantage on 1/13/22. Due 10/21/22**

If you have followed our program very long you know that we admire Canadian genetics and especially those from the Wheatland program. We think that there are a lot of great genetics and traits these cattle can bring to our programs. This red female has a great set of EPD's and will bring the potential for growth to her offspring. Look forward to her calf by Clear Advantage.



Lot 40

CLEAR WATER SIMMENTALS

41

## CLRWTR *Cora* H58B

BD. 9/21/20 • ASA#. 3900073 • Purebred Bred Heifer  
Tattoo. H58B • Adj. BW. 83 lbs. • Adj. WW. 630 lbs.

CCR COWBOY CUT 5048Z

sire **WS PROCLAMATION E202**

WS MISS SUGAR C4

LLSF UPRISING Z925

dam **HF CORA 58C**

RP/MP TOO MUCH FUN 09Z

CE	BW	WW	YW	MCE	Milk	MWW	Marb	REA	API
9.2	1.6	87.9	131.8	5.0	27.1	71.0	0.37	0.73	144.4

**Lot 41A: Bull Calf by Mr. SR Right Now • BD: 9/21/22 • BW: 89 lbs.**

HF Cora has had a lot of friends over the years. JJ Jackson campaigned a daughter successfully at shows across the country, and now she is a leading female in his young herd. H58B is a tank with loads of rib shape and overall capacity. Many have asked about this striking baldy with an API of 144. I encourage viewing her coming at you watching this impressive beast. Take her home calve her out, she could be on flush list.



Lot 41



# Fall Cow-Calf Pairs & Spring Bred Cows

BESHEARS SIMMENTALS



Lot 42

42

BESH *Ms Diva* H903

BD. 10/12/20 • ASA#. 4007701 • 1/2 Simmental Bred Heifer  
Tattoo. H903 • Adj. BW. 92 lbs.

DAMERON FIRST CLASS

sire **EXAR CLASSEN 1422B**

EXAR PRINCESS 2006

CNS DREAM ON L186

dam **J2 MS. DIVAT04**

ET MS GIRL 52M

CE	BW	WW	YW	MCE	Milk	MWW	Marb	REA	API
7.9	2.4	80.3	114.8	5.0	21.3	61.4	0.29	0.68	113.0

**Lot 42A: Heifer Calf • BD: 9/20/22 • Sired by CLRWTR Clear Advantage**

No matter what type of operation you run, females like H903 are foundational females for any herd. Easy keeping, deep bodied, and moderate framed are what great females are made of, and we have no doubt this female is next in line for Simmental greatness. H903 is a daughter of J2 Diva who herself claimed purple banners for Jordon Simmentals, and we are proud to have her working for our operation; especially when she produces females like this one. Bred to Clear Advantage for an exciting addition.



Lot 43

43

BESH *Ms Lavish* HE809

BD. 10/1/20 • ASA#. 4007703 • 3/4 Simmental Bred Heifer  
Tattoo. HE809 • Adj. BW. 83 lbs.

MR TR HAMMER 308A ET

sire **HARA`S DISTINCTION 10C**

HARA`S MISS PLATINIUM

REDSKIN

dam **BESH MS LAVISH E809**

STF LAVISH W809

CE	BW	WW	YW	MCE	Milk	MWW	Marb	REA	API
10.1	1.2	69.8	101.6	3.2	19.5	54.3	-0.04	0.91	91.3

**CLRWTR Clear Advantage on 1/13/22. Due 10/21/22**

A beautiful baldie picture perfect female. This female has a different pedigree, but the same great foundation and phenotype Simmental females are built upon. Look at her picture - the extension, length, and depth is striking. Add that on top of the extension and look Clear Advantage will add to their offspring is exciting for the future.

## Spring Bred Cows

BESHEARS SIMMENTALS



Lot 44

44

BESH *Ms* HW14

BD. 4/15/20 • ASA#. 3765658 • Purebred Bred Cow  
Tattoo. HW14 • Adj. BW. 87 lbs.

MR HOC BROKER

sire **BESH HAPPY TIME D910**

NJC/TJF JOY

HTP SVF IN DEW TIME

dam **BESH PENELOPE W14**

BESHEARS MISS DUNK M1

CE	BW	WW	YW	MCE	Milk	MWW	Marb	REA	API
7.2	3.7	67.5	90.8	3.4	21.2	54.9	0.00	0.72	110.0

**PE to BESH BULL H123 5/15/22 to 8/1/22. Safe**

Learning from and watching Leah's program over the years, we knew that bringing a solid set of bred females matched the ideals of the Clear Water program. We believe baldie female fits that mold nicely with her length, shape, and eye appeal. She is bred up to our Deplorabull son.



# Spring Bred Cows

BESHEARS SIMMENTALS

45

BESH *Ms Tina* HE29

BD. 5/15/20 • ASA#. 3778366 • Purebred Bred Cow  
Tattoo. HE29 • Adj. BW. 96 lbs.

MR CCF VISION

*sire* BESH BULL F901

CEN MISS RED RUSH 439R

CCR SANTA FE 9349Z

*dam* BESH MS TINA E029

HPF/BORNE KNOCKOUT Y030



Lot 45

CE	BW	WW	YW	MCE	Milk	MWW	Marb	REA	API
8.1	3.0	76.1	111.1	4.4	18.7	56.7	-0.07	0.85	107.7

PE to BESH BULL H123 6/2/22 to 8/1/22. Safe

CEN Miss Red Rush has been good to us over the years. We have females working in our herd, and have been able to share her genetics with Simmental breeders here in the U.S. This young female is bred up to a Deplorable bull son that is doing a great job for us.

BESHEARS SIMMENTALS

46

BESH *Ms Winnie* EU2

BD. 2/5/17 • ASA#. 3272187 • Purebred Bred Cow  
Tattoo. EU2 • Adj. BW. 92 lbs.

W/C NO REMORSE 763Y

*sire* W/C BF INNOCENT MAN

MISS WERNING 174Y

TRIPLE C MAJIC MAN M211

*dam* TRIPLE C MISS WISCONSIN

GRACE N10



Lot 46

CE	BW	WW	YW	MCE	Milk	MWW	Marb	REA	API
9.9	1.4	62.8	90.1	5.2	32.2	63.5	-0.03	1.11	114.3

AI'd to CLRWTR Clear Advantage on 5/19/22. Safe

Deep bodied, easy keeping cow here that has been good to us over the years. Her pedigree traces back to the great Triple C Miss Wisconsin and is bred to Clear Advantage.

BESHEARS SIMMENTALS

47

BESH *Ms Olivia* DBCR

BD. 11/10/16 • ASA#. 3249276 • 3/8 Simmental Bred Cow  
Tattoo. DBCR • Adj. BW. 77 lbs.

JASS/JS OPTIMIZER 58X

*sire* HPF OPTIMIZER A512

HPF RACHELS DREAM X590

*dam* BCR



Lot 47

CE	BW	WW	YW	MCE	Milk	MWW	Marb	REA	API
11.5	1.3	80.2	122.8	4.9	20.0	60.0	-0.10	0.87	97.4

PE to BESH BULL H123 5/15/22 to 8/1/22. Safe

We are excited to offer a group of hardworking, easy keeping cows that still have a lot of years ahead of them. This baldie, Optimizer female is easy to admire, and we don't blame you if you take a little extra time to admire her in the sale pen. Don't miss taking a look at the beautiful udder she has.



# Spring Bred Cows



**Lot 48**

48

## BESH *Ms* CL48

BD. 1/23/15 • ASA#. 2985535 • Purebred Bred Cow  
Tattoo. CL48 • Adj. BW. 95 lbs.

HTP/SVF DURACELL T52

*sire* **SS/PRS TAIL GATER 621Z**

KENCO MILEY COTTONTAIL

KENCO/MF POWERLINE 204L

*dam* **STF POWDER PUFF NL48**

STF MISS LD48

CE	BW	WW	YW	MCE	Milk	MWW	Marb	REA	API
9.2	3.2	79.8	119.0	4.6	21.0	60.8	-0.02	0.82	114.4

**PE to BESH BULL H123 5/15/22 to 7/2/22. Safe**

KenCo Miley Cottontail has been a breed-leading donor for many years, and her influence is undeniable to our breed. CL48 stems from the Miley line through the Tailgator bull, and he stamped her with his front end extension and depth of body.

BESHEARS SIMMENTALS



**Lot 49**

49

## BESH *Ms Belle* B2117

BD. 3/5/14 • ASA#. 2946542 • Purebred Bred Cow  
Tattoo. B2117 • Adj. BW. 85 lbs.

3C W/C RIGHT TRACK W9462

*sire* **W/C WIDE TRACK 694Y**

MISS WERNING 694S

R&R CHAMBERLAIN X744

*dam* **JF LATISHA 2117Z**

JF LATISHA 5153R

CE	BW	WW	YW	MCE	Milk	MWW	Marb	REA	API
9.1	5.4	86.4	130.3	1.6	17.5	60.7	0.04	0.84	118.5

**AI'd to Conley No Limit on 7/16/22. Safe.**

Look back through Simmental sale results and you will see the influence that JF Latisha had on the Janssen program as well as others. Latisha had a lot of friends over the years and produced some great open heifers that were marketed through the Janssen program. We were lucky to bring home a few of those females over the years. These genetics are what great cow families are made of in our breed.

BESHEARS SIMMENTALS



**Lot 50**

50

## BESH *Ms Miley* BX27

BD. 1/7/14 • ASA#. 2881835 • Purebred Bred Cow  
Tattoo. BX27 • Adj. BW. 79 lbs.

ELLINGSON LEGACY M229

*sire* **MR NLC UPGRADE U8676**

MS NLC MOJO S6119 B

B&D 13M

*dam* **BESH MS MEMORY X27**

STF REMEMBER ME 662P

CE	BW	WW	YW	MCE	Milk	MWW	Marb	REA	API
11.5	1.5	68.1	100.6	5.2	15.1	49.1	0.12	0.87	125.1

**AI'd to CLRWTR Clear Advantage on 3/12/22. Safe**

Living in Indiana we have been lucky to have the influence of the STF program in our operation over the years. This female has been a solid producer for us over the years, and has raised several bulls and females that we have been able to market through various sales. BX27 sells safe to Clear Advantage.

BESHEARS SIMMENTALS



# Right to Love Embryos



*Swigart*

*Lot 51 Donor*

CLEAR WATER SIMMENTALS

HPF *Right to Love* B320

BD. 1/20/14 • ASA# 2871543 • Purebred Donor  
Tattoo. B320 • Adj. BW. 75 lbs.

TRIPLE C SINGLETARY S3H

*sire* CCR COWBOY CUT 5048Z

CCR MS 4045 TIME 7322T

SVF/NJC BUILT RIGHT N48

*dam* RP/MP RIGHT TO LOVE 015U

PCC QUEENS VALENTINE R9

Donor Dam's EPDs

CE	BW	WW	YW	MCE	Milk	MWW	Marb	REA	API
11.8	0.1	82.3	119.9	7.7	24.6	65.7	0.32	0.46	148.1

**Lot 51A: Selling 3 IVF sexed heifer embryos by W/C Bet On Red, Projected EPDs**

CE	BW	WW	YW	MCE	Milk	MWW	Marb	REA	API
12.4	0.3	80.0	114.8	6.9	22.7	62.6	0.27	0.79	145.2

**Lot 51B: Selling 3 IVF sexed heifer embryos by SO Remedy 7F, Projected EPDs**

CE	BW	WW	YW	MCE	Milk	MWW	Marb	REA	API
12.5	0.9	83.6	129.4	7.1	23.2	64.9	0.12	0.68	136.2

HPF Right to Love B320 is the newest addition to the Clear Water Simmentals donor battery, and we think she fits in perfectly with the ideals and values of our operation. B320 was recently purchased out of the Illini Elite Sale from Hillstown Farms. If you don't know Joey Chandler you should know two things about him - he loves his family and Right to Love daughters. B320 came to Hillstown Farms after her acquisition from the HPF dispersal sale. Joey has never sold a calf out of her for less than \$5,000. We know the impact of Right to Love on the Simmental breed, and had B320 on our list at the HPF dispersal, but wasn't able to bring her home that day. When this catalog hit our mailbox and that awesome picture jumped off the page; we knew it was time for her to come to Milan. The pregnancy that sold right after we purchased the B320 brought \$5,200. We are excited to get this female to work here at Clear Water and have the chance to sell the first embryos here at the Clear Choice by W/C Bet On Red or SO Remedy.



THE CLEAR  
CHOICE

*upcoming sales*

**BULL SALE • MARCH 25, 2023**  
**CUSTOMER SALE • APRIL 29, 2023**  
**FEMALE SALE • OCTOBER 21, 2023**



# Foundation Donation Heifer



**CATTLEMEN'S  
CONGRESS**

*She Sells  
in January!*



**For more information on the American Simmental-Simbrah Foundation please contact Mia Bayer at 715-573-0139 or [mbayer@simmgene.com](mailto:mbayer@simmgene.com)**

CLRWTR *Ms Sugar* K4F

BD. 1/17/22 • ASA# 4099639 • Purebred Open Heifer • Tattoo. K4G

W/C DOUBLE DOWN 5014E  
*sire* **WHF/JS/CCS DOUBLE UP G365**  
 WHF SUMMER 365C  
 CDI INNOVATOR 325D  
*dam* **CLRWTR SUGA H4C**  
 WS MISS SUGA C4

CE	BW	WW	YW	MCE	Milk	MWW	Marb	REA	API
12.8	1.2	83.8	123.5	6.6	28.5	70.3	0.27	0.92	142.6

It is with great excitement that Jeff and I donate CLRWTR Ms Sugar K4F to benefit the American Simmental-Simbrah Foundation. Jeff and I believe whole-heartedly in programs that benefit youth, and even more so when it is something that is giving back to livestock kids. The late Peter Courtney was a dear friend to us here at Clear Water, and we are very proud to be a part of a program that he created to assist the next generation of Simmental breeders. CLRWTR Ms Sugar K4F stems from one of the most exciting cow families there currently is in our breed; going back to the legendary WS Miss Sugar C4. Our sale has seen her influence with top selling future herd sires, and we are excited to watch the females influence our operation for many years to come. It was our goal to not only donate a heifer to the ASSF, but we wanted it to be a female we were extremely proud of and genetics that we felt would be beneficial to future generations; just as the monies raised from the Foundation are beneficial for years to come through Merit Award Scholarship recipients. K4F is the best of both worlds - she has great phenotypical characteristics as well as genetic merit through her outstanding set of EPDs.

**CLRWTR Ms Sugar K4F will be available at the Cattleman's Congress in Oklahoma City in January 2023. If you are interested in donating to the cause please see Holli Hatmaker, American Simmental-Simbrah Foundation Board Member at the sale.**



# clear ADVANTAGE

CLRWTR

H4G



PB SIMMENTAL | ASA # 3858588 | 09.07.20 | HOMO BLACK, HOMO POLLED

LLSF VANTAGE POINT F398 X WS MISS SUGAR C4

ten semen  
packages

	CE	BW	WW	YW	MCE	Milk	MWW	Stay	Doc	CW	YG	Marb	BF	REA	Shr	API	TI
<b>EPD</b>	16.8	-1.1	98.9	151.2	8.9	31.3	80.7	13.4	16.6	41.6	-0.31	0.58	-0.072	0.82	-0.31	170.5	<b>106.5</b>
<b>%</b>	3	10	3	4	10	10	2	90	4	15	95	3	75	65	70	3	<b>1</b>

CLEAR WATER AND BESHEARS SIMMENTALS

Packages of 5 units, sexed heifer semen

**100A** \_\_\_\_\_ **100B** \_\_\_\_\_  
**100C** \_\_\_\_\_ **100D** \_\_\_\_\_  
**100E** \_\_\_\_\_ **100F** \_\_\_\_\_  
**100G** \_\_\_\_\_ **100H** \_\_\_\_\_  
**100I** \_\_\_\_\_ **100J** \_\_\_\_\_

Selling 100 units of sexed heifer semen -- We were excited about the future of Clear Advantage when we offered sexed semen out of this Sugar son this spring, and 7 months later our excitement has been growing as we have been able to see the first calves begin to hit the ground, and the females that are being bred to Clear Advantage. As you look back through this sale catalog, you will see that we believe in him so much that the majority of all the sale animals sell bred to Clear Advantage. We aren't just trying to sell semen; we believe in the genetics, phenotype, and future of this bull. He has a breed-leading set of EPD's with a powerful 170 API. Take this opportunity as either a chance to get in on this semen for the first time, or to replenish the semen you have already used to take your operation to the next level. Either way you will not be disappointed.





DP Sales Management, LLC  
153 Bourbon Hills  
Paris, KY 40361  
[www.dpsalesllc.com](http://www.dpsalesllc.com)



5<sup>TH</sup> ANNUAL

# THE CLEAR CHOICE

*female sale*

SATURDAY, OCTOBER 22, 2022  
1:00 PM EST • MILAN, IN

*Selling 60+ Simmental & SimAngus Females  
Show Heifer Prospects, Proven Donors & Bred Females*